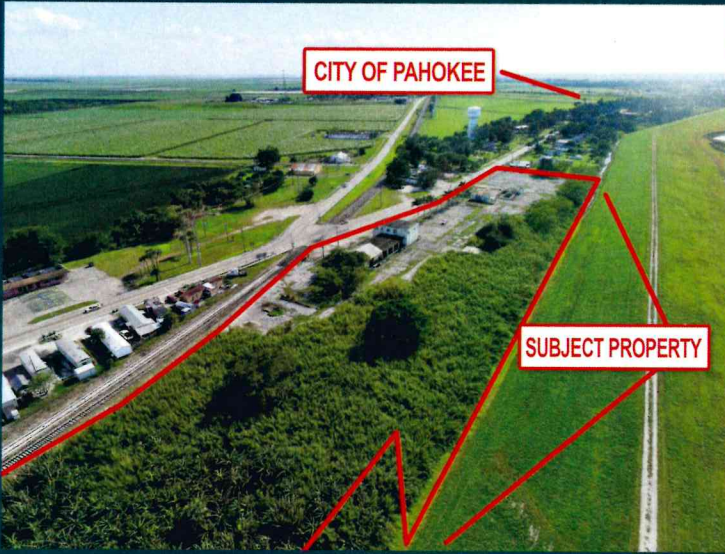


ABSOLUTE REAL ESTATE AUCTION

2701 E. Main St, Pahokee, FL 33476

7± Acre Former Packing Facility Located Directly Adjacent to FEC Railway



Thurs., February 7th at 12 pm

- Located at the Intersection of Main St. and N. State Market Road
- Excellent for Storage or Other Industrial or Agricultural Use
- Minutes from Royal Palm Beach and Wellington
- Water and Sewer on Site
- 3 Buildings Onsite:
 - 5,504 Sq ft Cold Storage Building
 - 2,091 Sq Ft Warehouse Storage
 - 2,706 Sq Ft Warehouse Storage

Terms: Public is welcome. \$10,000.00 cashier's check must be displayed in order to bid. A deposit in the amount of 10% of the total contract will be collected on the day of the auction with the balance due on or before March 7th. TIME IS OF THE ESSENCE. 10% Buyer's premium will be applied to the top bid made and taken and will be included in the total contract price. Buyer will be responsible for all closing costs (Doc. Stamps, title insurance, etc.). Bidder information package available upon request. Property is being sold as-is, with no warranties or representations being made for use or condition. Auctioneer represents the seller in this transaction. Broker participation is available, please call to qualify. Announcements made at the auction take precedents over any printed materials.

HARTMANAUCTION.COM | 772-872-6045



3500 SW Corporate Pkwy
Suite 202
Palm City, FL 34990
(772) 872-6045
www.HartmanAuction.com
Licensed: AB3197 AU345

7± Acre Former Packing Facility Located Directly Adjacent to FEC Railway

Absolute Auction Make Your Offer Live On-site Thurs., February 7th at 12 pm

